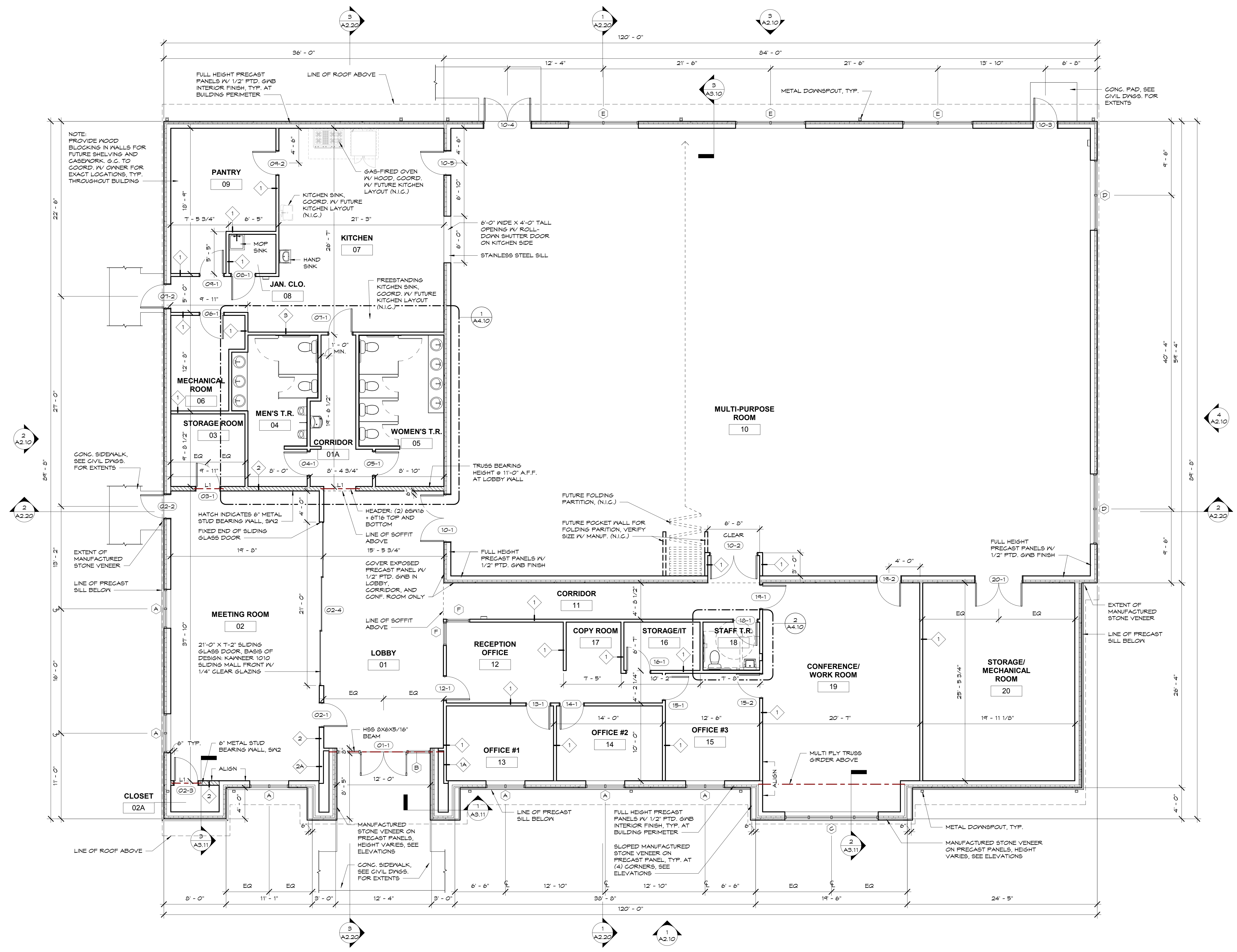


Revisions		
No.	Date	Description



**1 FIRST FLOOR PLAN**  
3/16" = 1'-0"

ALL REPORTS, PLANS, SPECIFICATIONS AND COMPUTER FILES RELATING TO THIS PROJECT ARE THE PROPERTY OF MANDERS MERIGHI PORTADIN FARRELL ARCHITECTS, LLC. STATUTE AND OTHER RESERVED RIGHTS INCLUDING THE COPYRIGHT THEREIN. REPRODUCTION OF THE MATERIAL HEREIN OR SUBSTANTIAL USE WITHOUT WRITTEN PERMISSION OF MANDERS MERIGHI PORTADIN FARRELL ARCHITECTS, LLC IS STRICTLY PROHIBITED AND WILL BE SUBJECT TO LEGAL PROSECUTION.

© 2018, MANDERS MERIGHI PORTADIN FARRELL ARCHITECTS, LLC



Manders Merighi Portadin Farrell Architects, LLC  
1138 East Chestnut Avenue Vineland, New Jersey 08360  
p. 856.696.9155 | f. 856.696.9080 | www.mmpfa.com  
David G. Manders AIA AI-07220  
Lawrence J. Merighi AIA AI-07473  
Ronald P. Portadin AIA AI-13038  
Peter W. Farrell AIA AI-13618

**PRELIMINARY**  
**>NOT FOR<**  
**CONSTRUCTION**

**Project**  
NEW PARISH HALL FOR  
**ST. MAXIMILIAN KOLBE**  
200 TUCKAHOE RD.  
MARMORA, NJ 08223

<b>Drawing</b> FLOOR PLAN		
<b>Scale</b> 3/16" = 1'-0"	<b>Job</b> 17057	<b>Sheet</b> A1.10
<b>Drawn</b> CR	<b>Date</b> 12/27/18	